

## ONStor Pantera Series Clustered NAS

### Highlights

- N-way clustered architecture for seamless scalability.
- Virtual servers for granular management.
- Single-pool storage across all nodes eliminates data migration.
- Capacity scalable to petabytes.
- Aggregate performance to 288,000 operations per second.
- Linear performance growth from one to eight nodes.
- Integrated snapshot capabilities.
- Tiered storage with high-performance Fibre Channel/SAS and low-cost SATA drives.
- Remote data replication (optional).
- Automated capacity provisioning.
- Seamless data sharing across Windows, UNIX, Linux, and Mac clients and servers.
- Active Directory integration.
- Easy to use web-based management.
- Affordable entry configurations.
- Proven in the world's largest data centers.

### Industry's highest ROI

ONStor Pantera Clustered NAS features a breakthrough architecture that combines n-way clustering, virtual servers, and single-pool storage to deliver the industry's simplest, most efficient storage solution. Compared with other enterprise NAS solutions, Pantera costs about half as much to buy and takes far less time to manage. In high-growth environments, the savings add up further thanks to Pantera's disruption-free linear scaling model.

### Built for consolidation

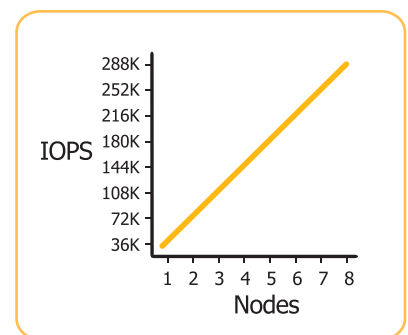
Purpose-built for large-scale server and storage consolidation, Pantera lets you start with an affordable entry configuration then scale seamlessly as requirements grow. In a full configuration, Pantera Clustered NAS can accommodate over 20,000 users, petabytes of data, and can deliver throughput up to 2.4GB per second, enough performance to accommodate 64,000 simultaneous broadband-quality video streams.

### Robust data protection

Integrated snapshot capabilities let you maintain point-in-time images to guard against deleted or corrupted files. The optional Data Mirror software provides replication to a remote Pantera for data archiving or disaster recovery purposes.

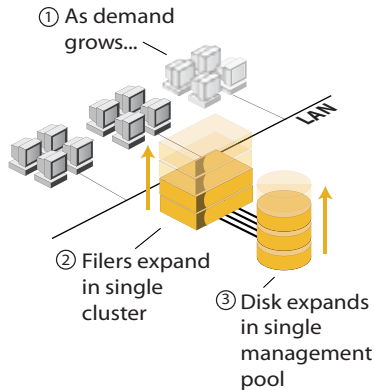
### N-way clustering for scalable performance

Your performance requirements are certain to change over time. With fully active-active n-way clustering, Pantera lets you respond instantly. Add throughput in minutes simply by adding nodes. There's no user or data migration required. And, Pantera delivers linear performance scalability. So every node provides the same high throughput.



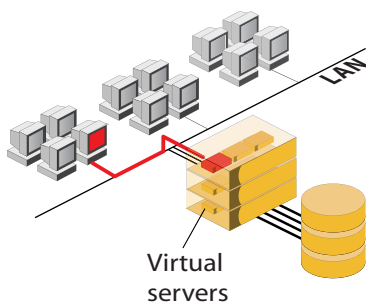
**Performance scales linearly, so you always get the throughput you expect. The efficient stateless architecture eliminates the performance-robbing overhead of cache coherency.**

## Single pool resources



**Add performance or capacity independently, as you need them. Grow to eight filers and petabytes of disk. Resources are managed within a single pool even as your environment grows.**

## Virtual servers



**Virtual servers let you transparently shift workload from one device to another, allowing you to load balance, scale performance, or take a filer down for maintenance, all without disrupting users. This level of granular management also makes it simple to meet unique application SLAs.**

## Single pool storage for scalable capacity

Need more storage space quickly? Just add capacity to the single-pool storage and it becomes available to all applications and users. A Fibre Channel link provides shared connectivity between all nodes and all storage capacity, eliminating the requirement for time-consuming data migration or storage redistribution when capacity is added.

## Virtual servers for granular resource management

ONStor Pantera includes integrated virtual servers to combine the simplicity of single-pool storage with the granular management of individual storage devices. Virtual servers are virtual NAS devices within the physical filers. Portable across nodes, they make it simple to load balance and transparently scale performance. You can deploy new servers in minutes to get users or applications up and running. And because you precisely control the resources, you can accommodate each application's specific requirements for performance, availability, and data protection.

## Tiered storage to meet application needs

ONStor Pantera is available with fast Fibre Channel/SAS and cost-effective SATA disk. For performance-sensitive applications, Fibre Channel/SAS combines the blazing performance of enterprise-class disk with the efficiency of a direct-connect high-speed interface. For cost-sensitive deployments, SATA storage delivers data density and low power consumption. ONStor Pantera allows both Fibre Channel/SAS and SATA to be combined within a single storage environment, so you can deploy applications on the right storage for your needs.

## Powerful and efficient

Built on ONStor's proven EverON software platform, Pantera Clustered NAS delivers scalability and performance from n-way clustered filers that are highly efficient. Each filer delivers up to 300MB of throughput, or up to 36,000 operations per second – on just 160 watts of power. Up to eight filers may be included in a single cluster. Four Pantera models allow you to match the performance delivery to your application requirements. All four models feature advanced capabilities such as virtual servers, AutoGrow, and integrated snapshots.

## Enterprise storage for superior reliability

Pantera storage arrays integrate enterprise features such as dual hardware controllers and hot standby disks to ensure the highest levels of data availability. User selectable options including RAID 0, 1, 3, 5, 10, or 50 let you match availability and performance with your application requirements.

Additional availability features include dual redundant power supplies and fans, and a battery-free controller cache backup that eliminates the lifespan and charge time issues associated with conventional battery backup.

ONStor, Inc.  
254 East Hacienda Avenue  
Campbell, CA 95008  
1-408-963-2400

[www.onstor.com](http://www.onstor.com)